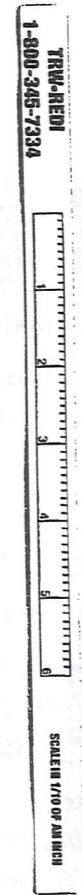


SCALE 1" = 300



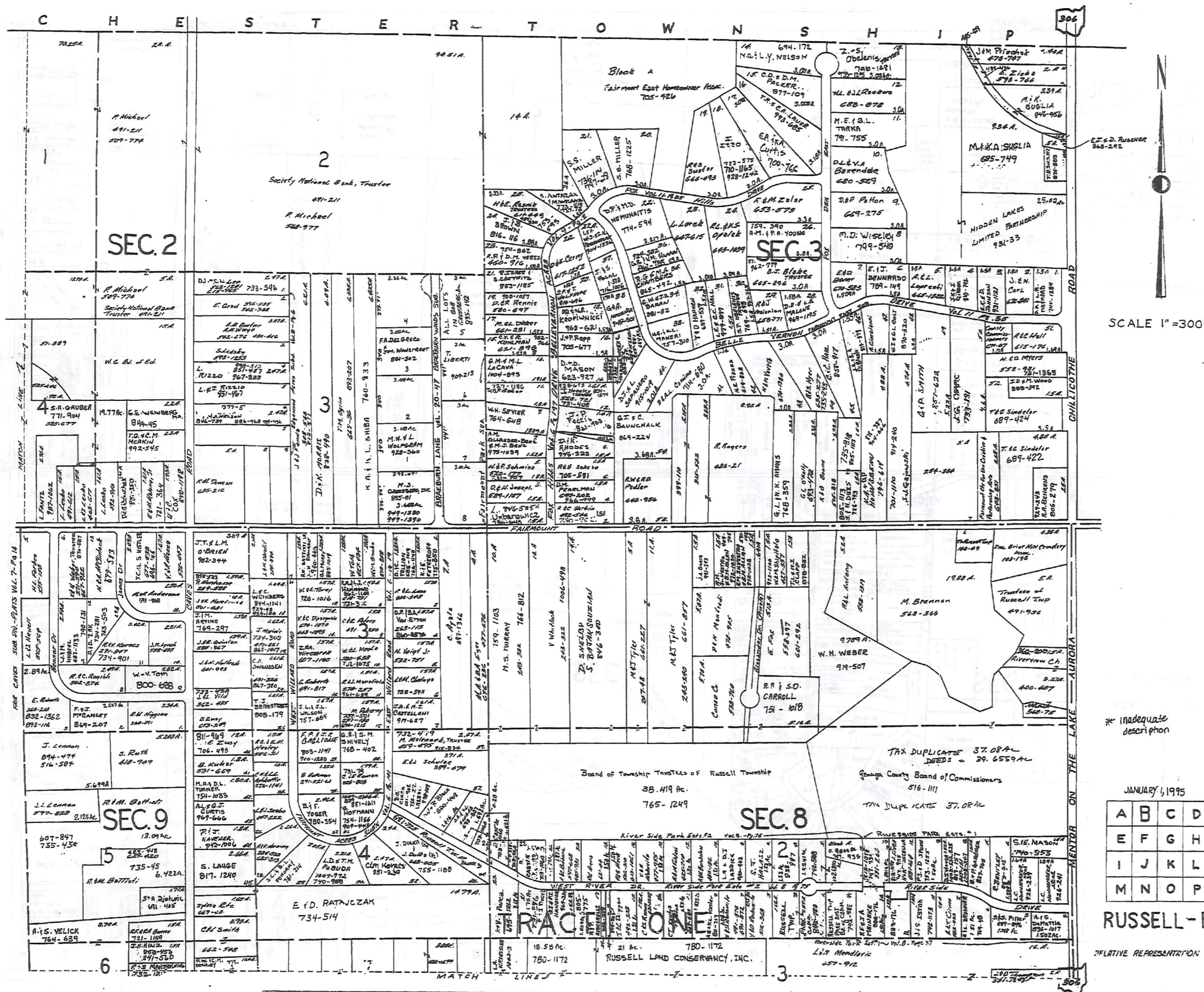
420

* Inadequate description

RELATIVE REPRESENTATION
JANUARY 1, 1995

A	B	C	D
E	F	G	H
I	J	K	L
M	N	O	P

RUSSELL A



TOWN-RED
1-800-348-7334

SCALE 1"=300'

421

* Inadequate description

JANUARY 4, 1995

A	B	C	D
E	F	G	H
I	J	K	L
M	N	O	P

RUSSELL-B

RELATIVE REPRESENTATION

Board of Township Trustees of Russell Township
38.419 Ac.
765-1249

Genoa County Board of Commissioners
516-1111

TAX DUPLICATE 37.08A
DEEDS = 39.6559AL

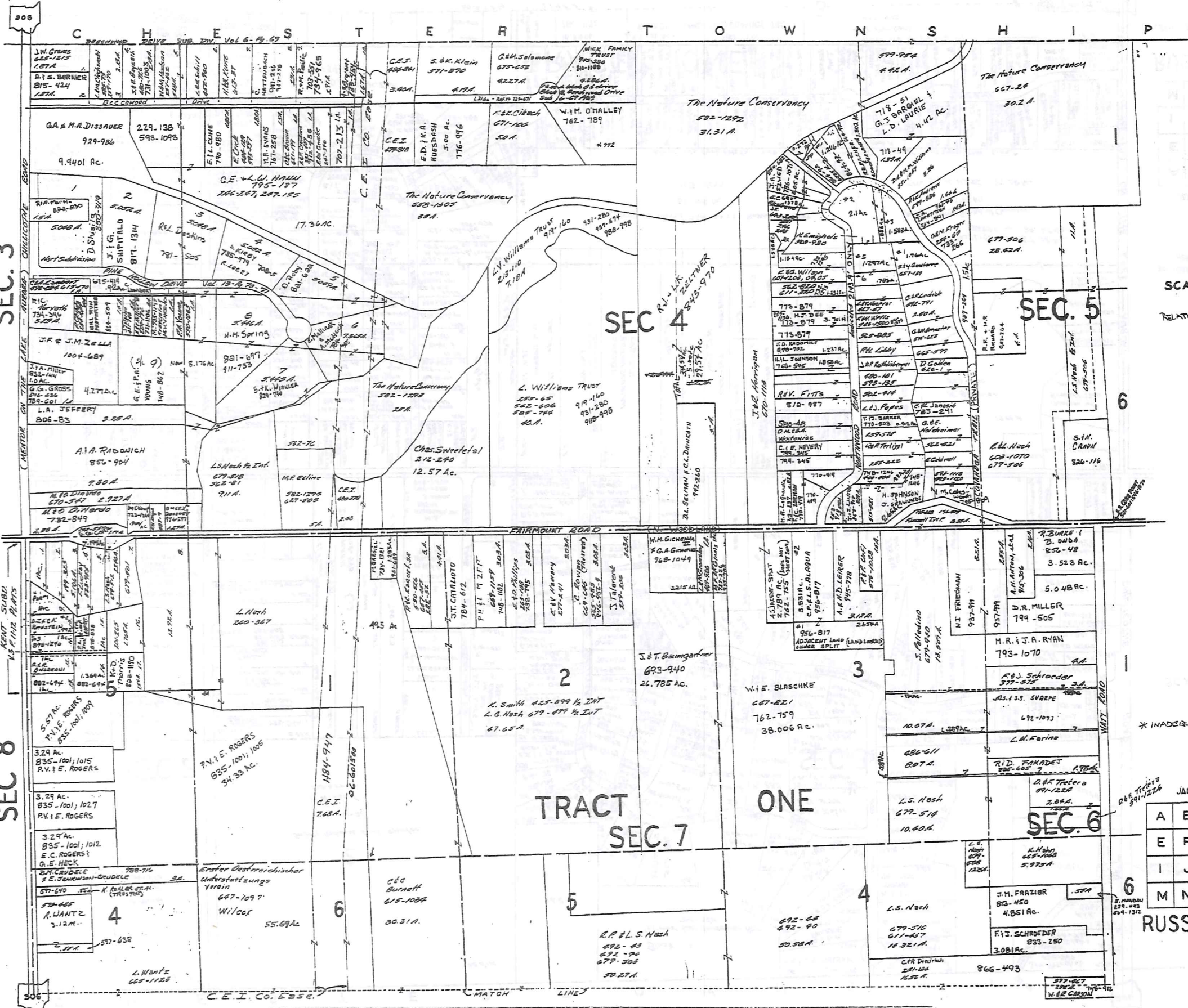
TAX DUPLICATE 37.08AL

SEC. 8

SEC. 9

RACEDOME

RUSSELL LAND CONSERVANCY, INC.



SEC. 3

SEC. 4

SEC. 5

SEC. 8

TRACT SEC. 7

ONE

SEC. 6

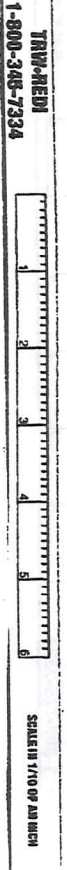
JANUARY 1, 1995

A	B	C	D
E	F	G	H
I	J	K	L
M	N	O	P

RUSSELL-C

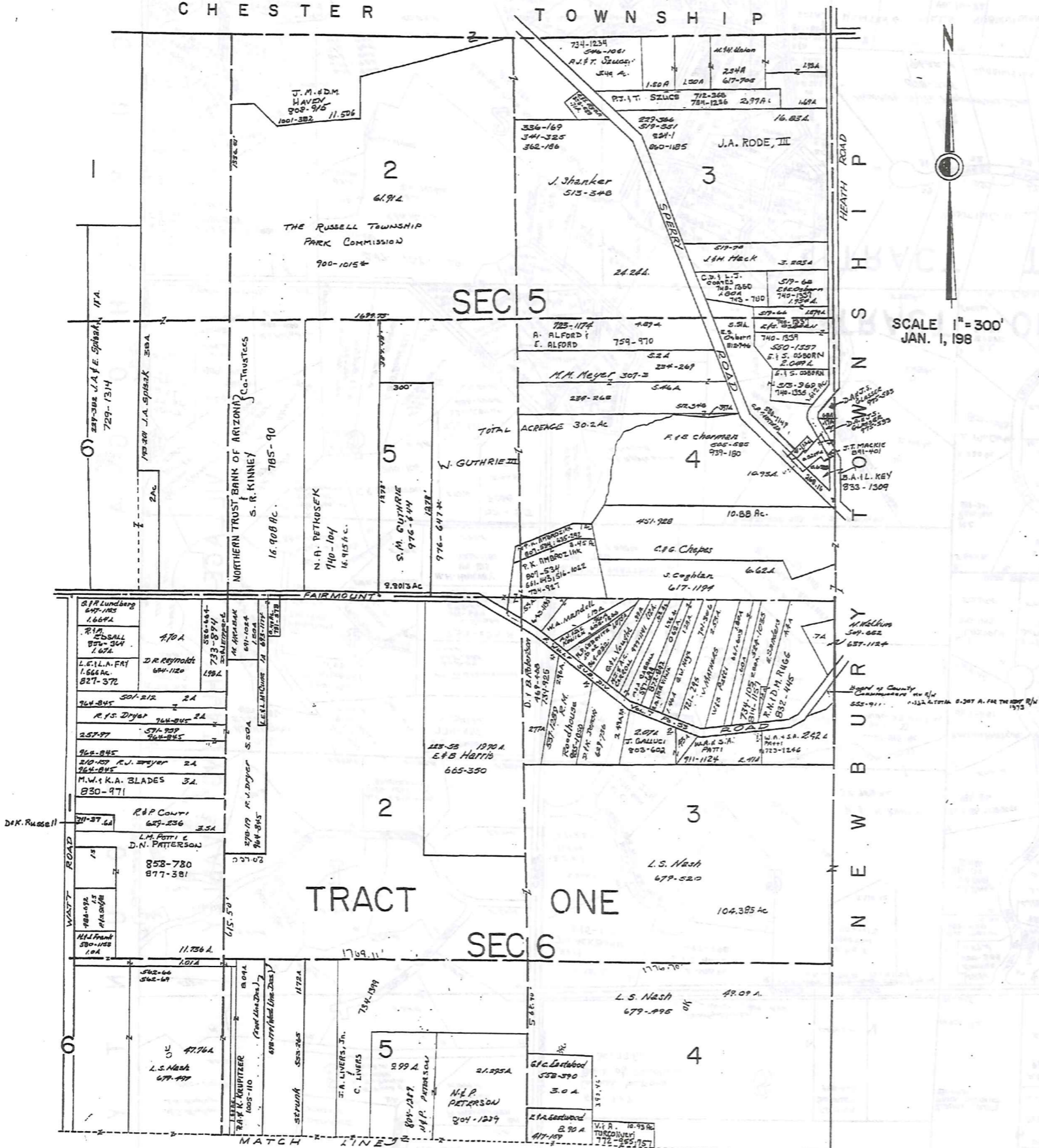


SCALE 1" = 300'
RELATIVE REPRESENTATION



422

CHESTER TOWNSHIP



SCALE 1" = 300'
JAN. 1, 198

TRW-REDI
1-800-348-7334
SCALE 1/100 OF ANCH

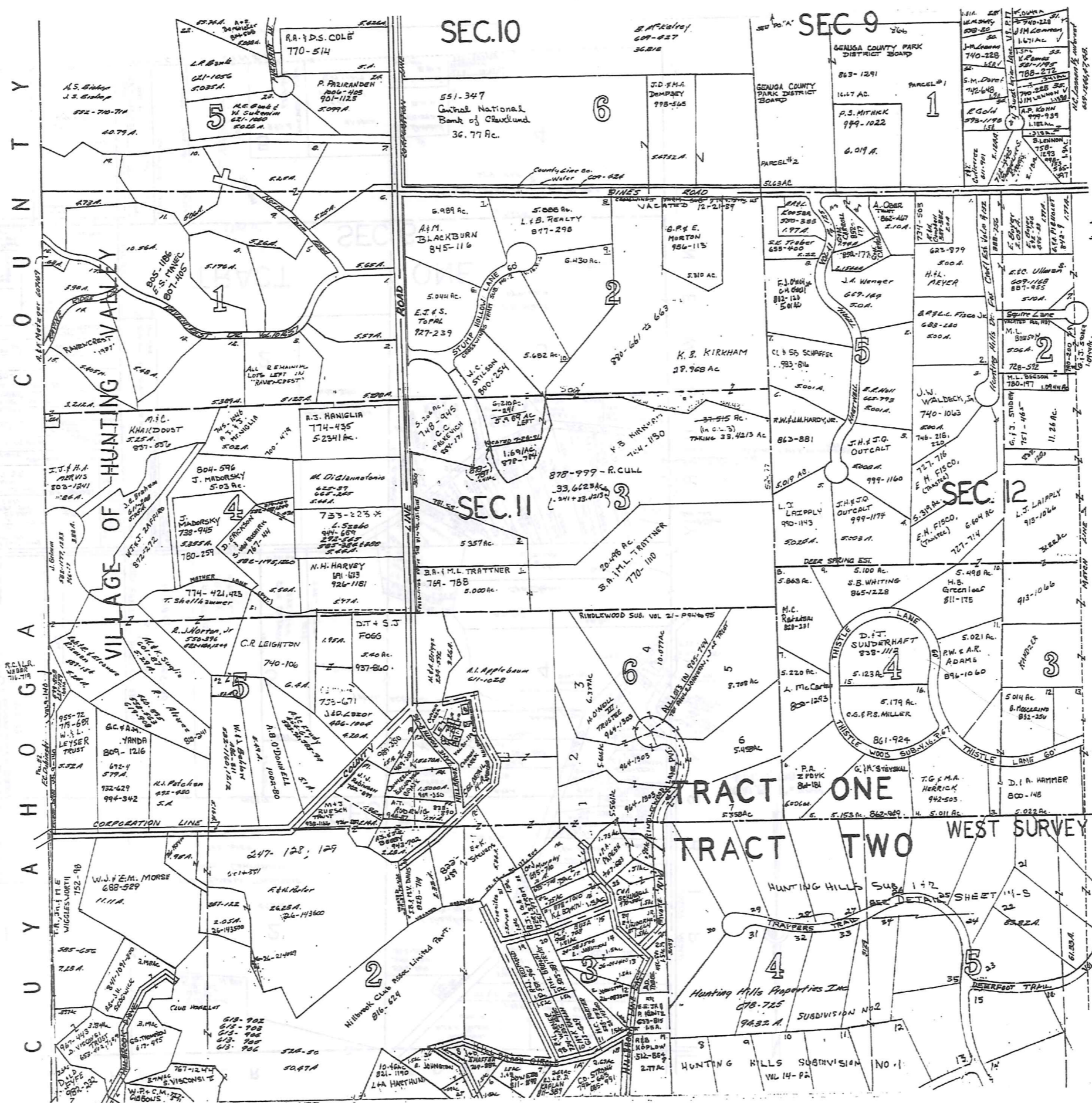
423

* Inadequate Description

JANUARY 1, 1995
RELATIVE REPRESENTATION

A	B	C	
E	F	G	H
I	J	K	L
M	N	O	P

RUSSELL-D



SCALE 1" = 300

TRACT ONE
 1-800-345-7334
 SCALE IN YD OF RANGE

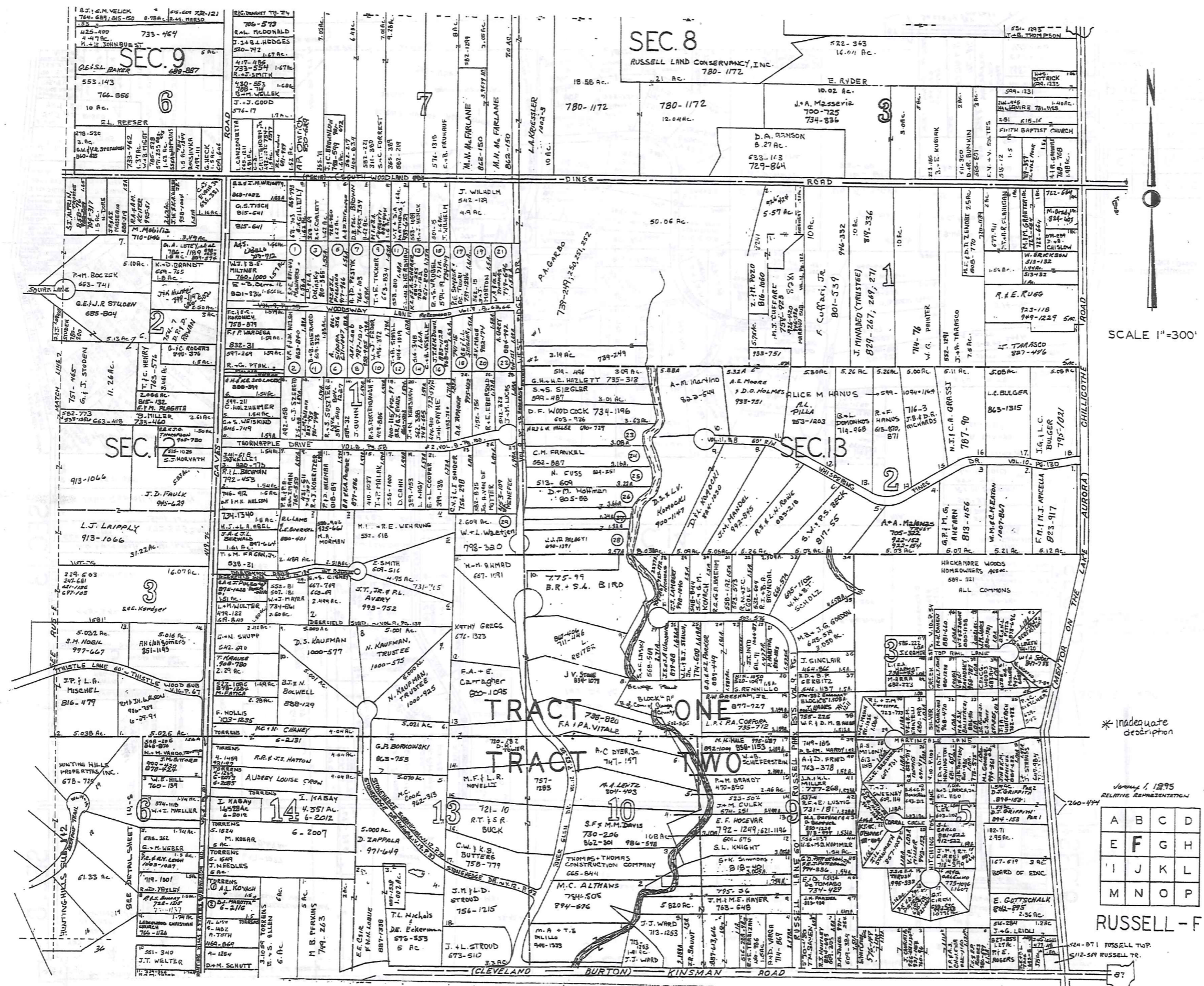
424

* Inadequate description

JUN 1, 1995
 RELATIVE REPRESENTATION

A	B	C	D
E	F	G	H
I	J	K	L
M	N	O	P

RUSSELL-E



SEC. 8

SEC. 9

6

7

SEC. 10

SEC. 11

3

2

TRACT ONE

TRACT TWO

SCALE 1"=300'



425

* Inadequate description

Volume 1, 1895
RELATIVE REPRESENTATION

A	B	C	D
E	F	G	H
I	J	K	L
M	N	O	P

RUSSELL - F

524-571 RUSSELL TOP.
512-549 RUSSELL TR.

RUSSELL LAND CONSERVANCY, INC.
780-1172

A.J. E.M. VELICK
764-687, 845-150
733-464
GESSA BAKER
553-143
766-656
E.L. REESER

786-573
E.M. McDONALD
417-486
733-554
R.A. SMITH
430-553
788-714
G.M. VELLEK
J.J. GOOD
576-17

780-1172
18.56 Ac.
780-1172
12.04 Ac.
J.A. Messeria
700-725
734-836
D.A. BRANSON
633-113
729-864

780-1172
12.04 Ac.
J.A. Messeria
700-725
734-836
D.A. BRANSON
633-113
729-864

780-1172
12.04 Ac.
J.A. Messeria
700-725
734-836
D.A. BRANSON
633-113
729-864

780-1172
12.04 Ac.
J.A. Messeria
700-725
734-836
D.A. BRANSON
633-113
729-864

780-1172
12.04 Ac.
J.A. Messeria
700-725
734-836
D.A. BRANSON
633-113
729-864

780-1172
12.04 Ac.
J.A. Messeria
700-725
734-836
D.A. BRANSON
633-113
729-864

780-1172
12.04 Ac.
J.A. Messeria
700-725
734-836
D.A. BRANSON
633-113
729-864

780-1172
12.04 Ac.
J.A. Messeria
700-725
734-836
D.A. BRANSON
633-113
729-864

780-1172
12.04 Ac.
J.A. Messeria
700-725
734-836
D.A. BRANSON
633-113
729-864

780-1172
12.04 Ac.
J.A. Messeria
700-725
734-836
D.A. BRANSON
633-113
729-864

780-1172
12.04 Ac.
J.A. Messeria
700-725
734-836
D.A. BRANSON
633-113
729-864

780-1172
12.04 Ac.
J.A. Messeria
700-725
734-836
D.A. BRANSON
633-113
729-864

780-1172
12.04 Ac.
J.A. Messeria
700-725
734-836
D.A. BRANSON
633-113
729-864

780-1172
12.04 Ac.
J.A. Messeria
700-725
734-836
D.A. BRANSON
633-113
729-864

780-1172
12.04 Ac.
J.A. Messeria
700-725
734-836
D.A. BRANSON
633-113
729-864

780-1172
12.04 Ac.
J.A. Messeria
700-725
734-836
D.A. BRANSON
633-113
729-864

780-1172
12.04 Ac.
J.A. Messeria
700-725
734-836
D.A. BRANSON
633-113
729-864

780-1172
12.04 Ac.
J.A. Messeria
700-725
734-836
D.A. BRANSON
633-113
729-864

780-1172
12.04 Ac.
J.A. Messeria
700-725
734-836
D.A. BRANSON
633-113
729-864

780-1172
12.04 Ac.
J.A. Messeria
700-725
734-836
D.A. BRANSON
633-113
729-864

780-1172
12.04 Ac.
J.A. Messeria
700-725
734-836
D.A. BRANSON
633-113
729-864

780-1172
12.04 Ac.
J.A. Messeria
700-725
734-836
D.A. BRANSON
633-113
729-864

780-1172
12.04 Ac.
J.A. Messeria
700-725
734-836
D.A. BRANSON
633-113
729-864

780-1172
12.04 Ac.
J.A. Messeria
700-725
734-836
D.A. BRANSON
633-113
729-864

780-1172
12.04 Ac.
J.A. Messeria
700-725
734-836
D.A. BRANSON
633-113
729-864

780-1172
12.04 Ac.
J.A. Messeria
700-725
734-836
D.A. BRANSON
633-113
729-864

780-1172
12.04 Ac.
J.A. Messeria
700-725
734-836
D.A. BRANSON
633-113
729-864

780-1172
12.04 Ac.
J.A. Messeria
700-725
734-836
D.A. BRANSON
633-113
729-864

780-1172
12.04 Ac.
J.A. Messeria
700-725
734-836
D.A. BRANSON
633-113
729-864

780-1172
12.04 Ac.
J.A. Messeria
700-725
734-836
D.A. BRANSON
633-113
729-864

780-1172
12.04 Ac.
J.A. Messeria
700-725
734-836
D.A. BRANSON
633-113
729-864

780-1172
12.04 Ac.
J.A. Messeria
700-725
734-836
D.A. BRANSON
633-113
729-864

780-1172
12.04 Ac.
J.A. Messeria
700-725
734-836
D.A. BRANSON
633-113
729-864

780-1172
12.04 Ac.
J.A. Messeria
700-725
734-836
D.A. BRANSON
633-113
729-864

780-1172
12.04 Ac.
J.A. Messeria
700-725
734-836
D.A. BRANSON
633-113
729-864

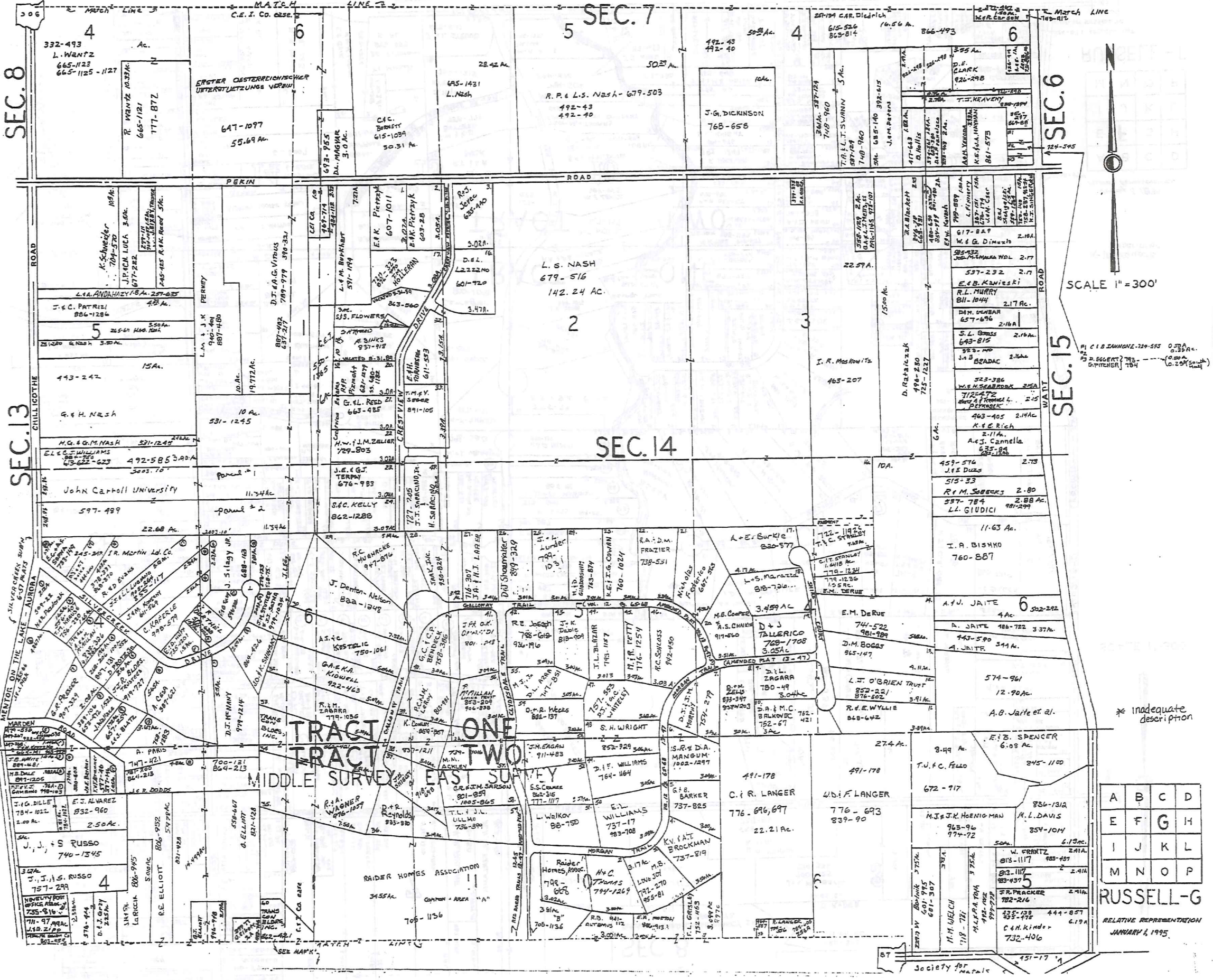
780-1172
12.04 Ac.
J.A. Messeria
700-725
734-836
D.A. BRANSON
633-113
729-864

780-1172
12.04 Ac.
J.A. Messeria
700-725
734-836
D.A. BRANSON
633-113
729-864

780-1172
12.04 Ac.
J.A. Messeria
700-725
734-836
D.A. BRANSON
633-113
729-864

780-1172
12.04 Ac.
J.A. Messeria
700-725
734-836
D.A. BRANSON
633-113
729-864

780-1172
12.04 Ac.
J.A. Messeria
700-725
734-836
D.A. BRANSON
633-113
729-864



SCALE 1" = 300'

TRIM-REDI
 1-800-345-7334
 SCALE 1/10 OF AN INCH

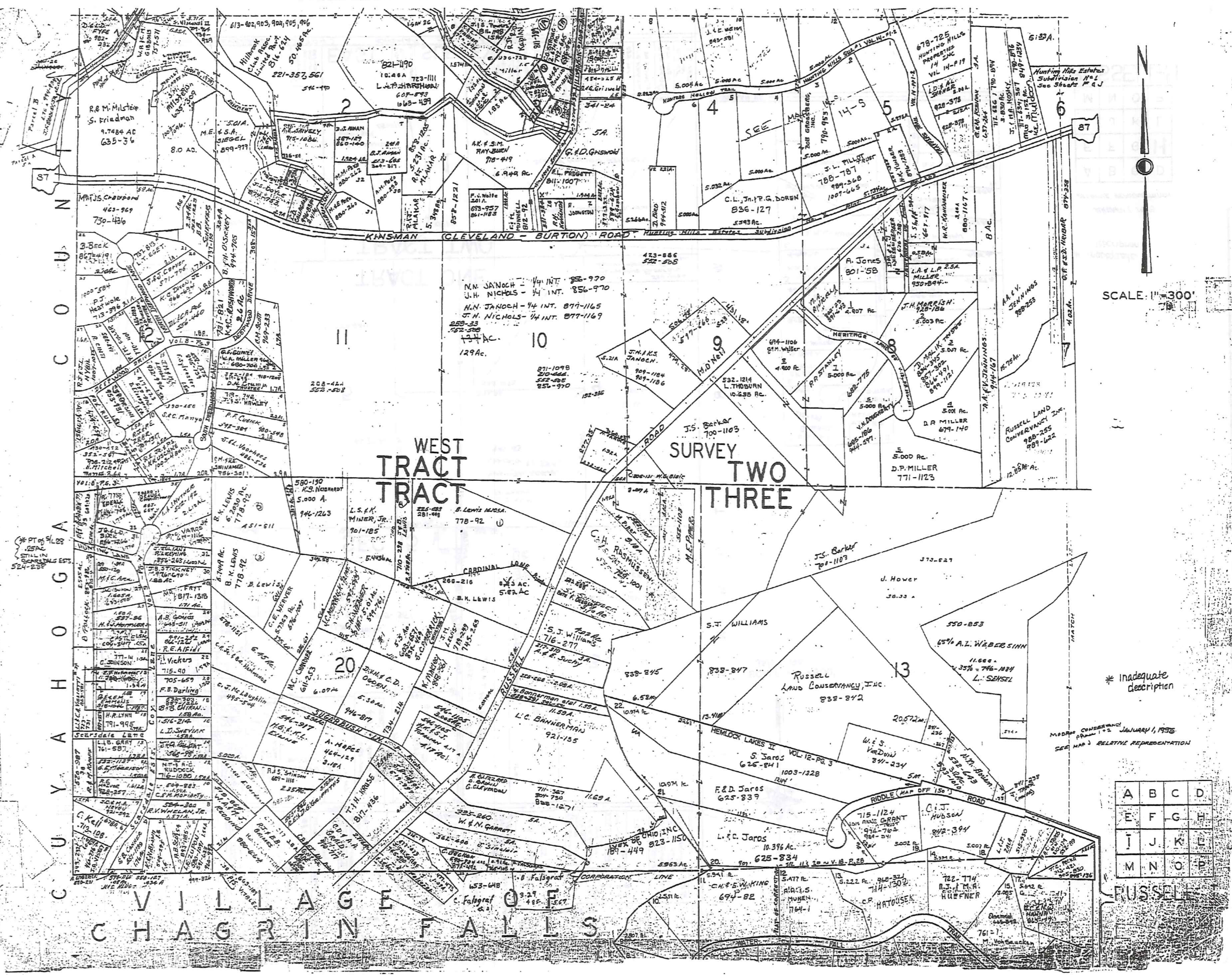
426

A	B	C	D
E	F	G	H
I	J	K	L
M	N	O	P

RUSSELL-G
 RELATIVE REPRESENTATION
 JANUARY 4, 1995

* Inadequate description

Society for Mafak



SCALE: 1"=300'

TRM-REDI
1-800-345-7334



428

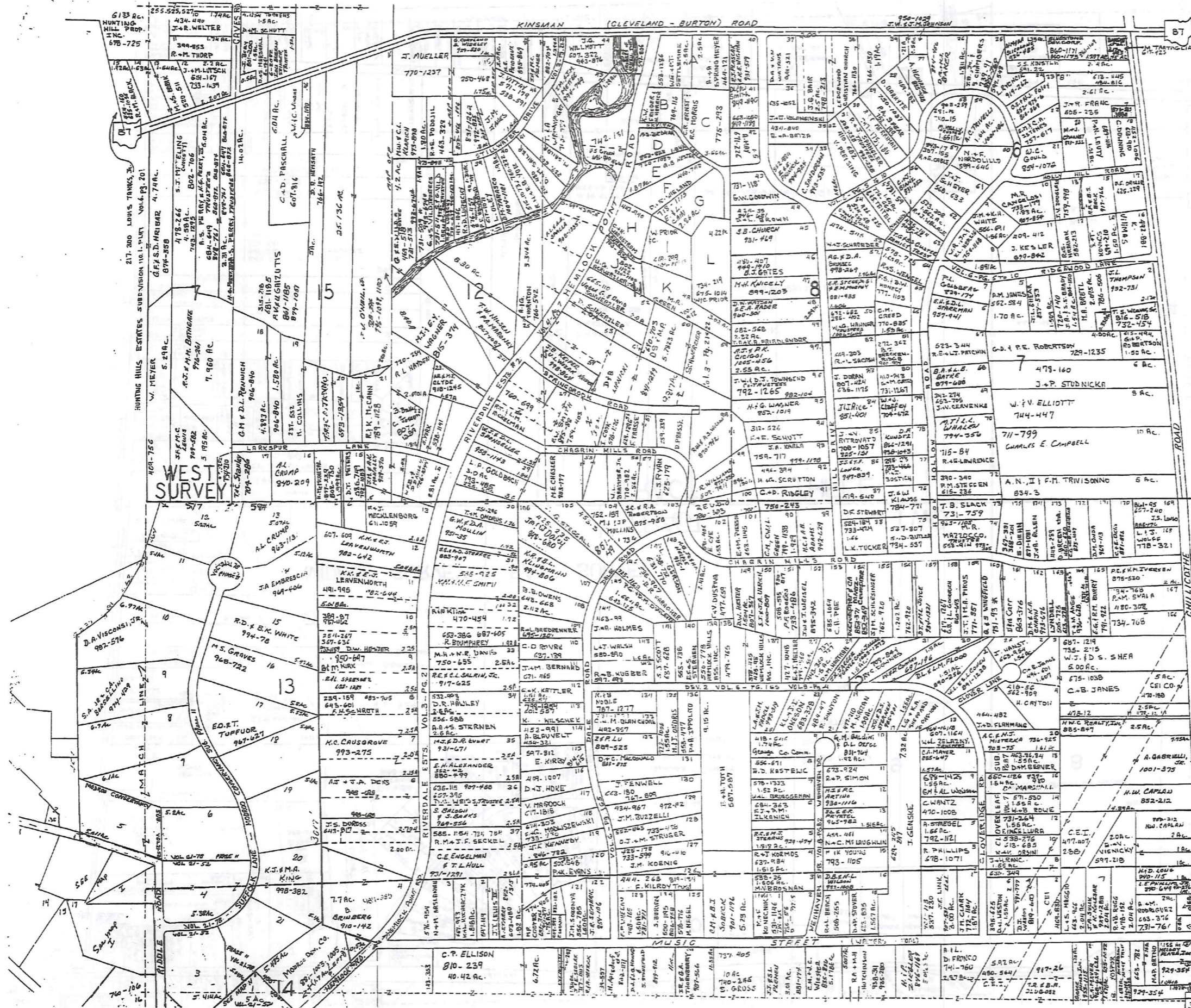
SCALE IN 1/16" OF AN INCH

* Inadequate description

MODERN CONVEYANCE FROM 175 JANUARY, 1936
SEE MAP 3 RELATIVE REPRESENTATION

A	B	C	D
E	F	G	H
I	J	K	L
M	N	O	P

RUSSELL



SCALE 1" = 300'

1-800-345-7334



429

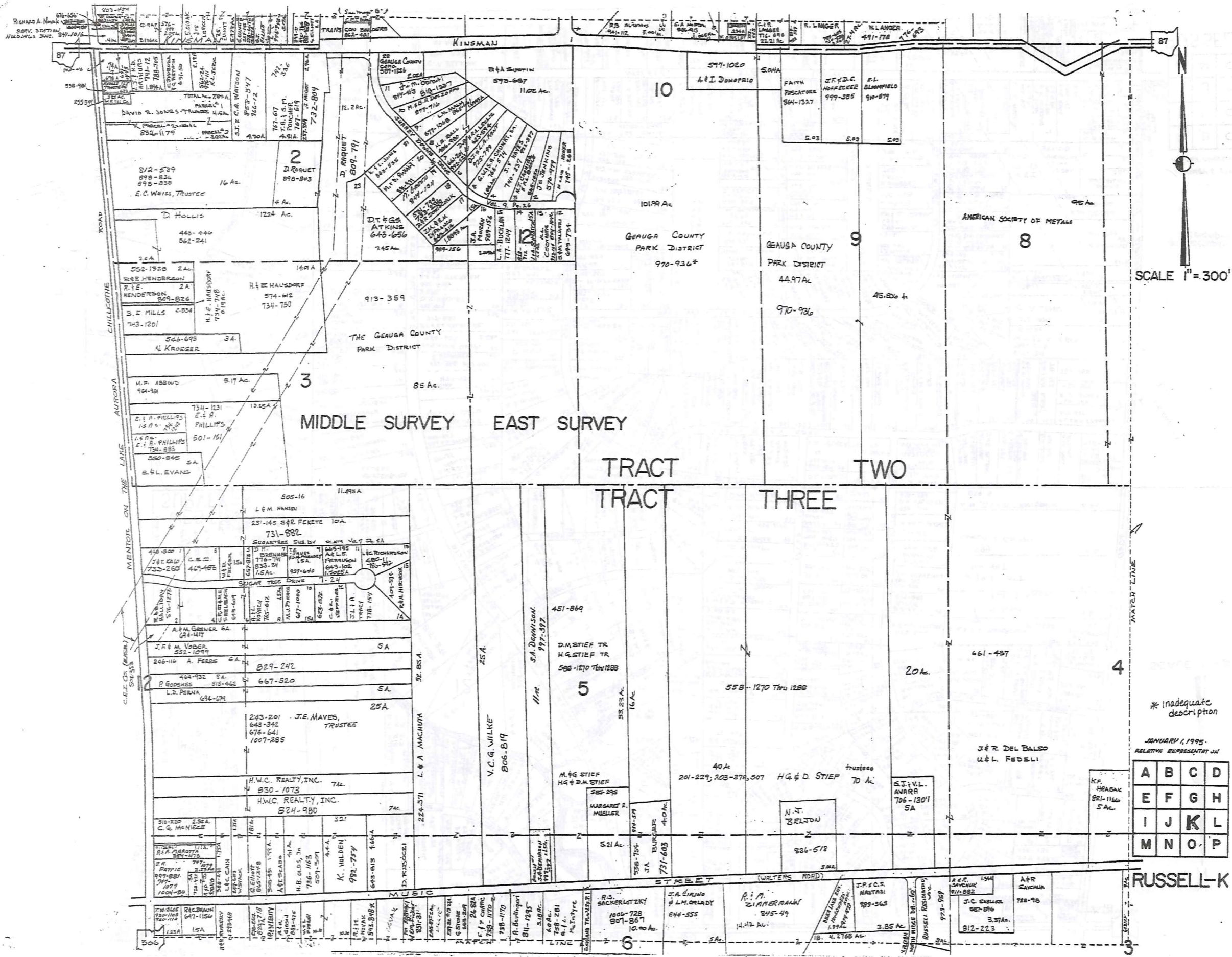
* inadequate description

JANUARY 1, 1995
RELATIVE REPRESENTATION

A	B	C	D
E	F	G	H
I	J	K	L
M	N	O	P

RUSSELL - J.

306



SCALE 1" = 300'

TMM-NEO1
 1-800-345-7334
 SCALE IN 1/16" OF AN INCH

430

* Inadequate description

JANUARY 1, 1995
 RELATIVE REPRESENTATION

A	B	C	D
E	F	G	H
I	J	K	L
M	N	O	P

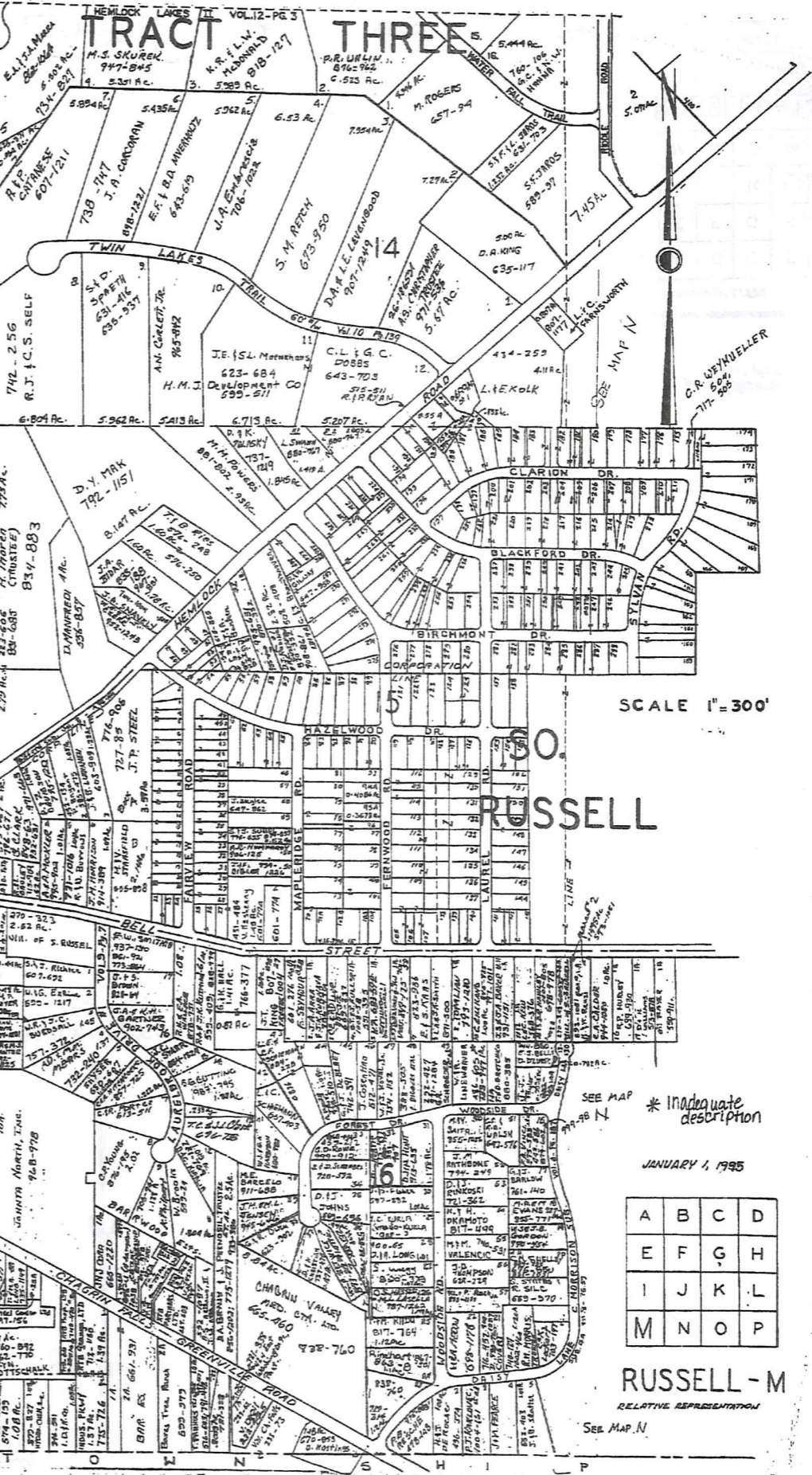
RUSSELL-K

CHAGRIN HEIGHTS SUBDIVISION VOL.3 - PG.5-6 & 17-18 PLATS

1 GERUGA COUNTY B.O.C. (27' x 42')	621-728	46 S.L. WILBERG	809-408	91 F.F. VAN LENTE	687-64
2 D. Man Fredi	454-896	47 R.G. BIRCHALL	903-963	92 C. SWANNE	942-211
3 " "	"	48 T.E. V.A. MARILLA	929-90	93 R.A. VAN BUREN, TRUSTEE	492-673
4 " "	"	49 " "	"	94 A.A. W. GIBSON, TRUSTEE	734-515
5 E. UnKrich	615-239	50 " "	"	95 J.G. T.S. ROCKWELL (TRUSTEE)	774-323
6 " "	"	51 G.A. LASH	734-1308	96 " "	"
7 " "	"	52 " "	"	97 R.J. J.A. & L.S. FRAZIER & M	721-562
8 " "	"	53 " "	"	98 W.D. GRUBB	665-1308
9 " "	"	54 " "	"	99 F. ST. PIER	411-114
10 S.OLLAND	616-258	55 P.H. LOY	608-837	100 D. Gosh. Hader	801-424
11 O. DIAMOND	674-575	56 A.L. BIRLOCK	839-651	101 " "	"
12 " "	"	57 S.W. WENDL	732-839	102 R. (102 + 728 + 618) J.M. GLAZEN	876-130
13 " "	"	58 M. TALLION	245-22	103 F.E. WISNIEWSKI	491-625
14 M. ALSTROM	802-1227	59 K. S. COVON	583-286	104 " "	"
15 " "	785-648	60 R.A.K. VEMEL	574-1260	105 C.J. HUNT 1/2 #106	245-542
16 M. Richards	537-536	61 J. J. COVON	801-625	106 " "	"
17 " "	"	62 A.G. LASH	1007-113	107 J.F. O'DONNELL + 1/2 #106	199-1203
18 " "	"	63 " "	"	108 T.A. BACHELOR 1/4 #105, 106, 107	741-623
19 " "	"	64 " "	"	109 B.K. UTTS	757-30
20 N. SIMPSON	508-593	65 G. CLOSE + 1/2 #64	200-11	110 G.L.M. FERTON + 0.095 AC.	789-264
21 R. DENNIS (and part of 23)	542-535	66 E.M. CUNNINGHAM & K.L. KLINE	925-746	111 F. BISSITT, LAND TRUSTEE	806-1243
22 E. BURLANSE	815-141	67 H.D. MERCER	270-362	112 R. W. HERRON	743-5
23 " "	"	68 R.F. ZIEGLER	551-568	113 M. JONES, TRUST	786-778
24 " "	"	69 J.L. LEFFLER	683-545	114 A.L.V. McHENRY + 1/2 #15	679-882
25 " "	"	70 T. SARAN	691-312	115 M.M. Metch	681-014
26 " "	"	71 A. O. DIAMOND (W.V.P.H.)	776-867	116 " "	"
27 V.I.J. MILLER	237-583	72 B. (Ser. 102A)	"	117 D.J. BROWN	667-714
28 W.H. PEARIS	733-862	73 L.C. GREEN	997-1013	118 R.G. FRANK & J. BROWN	878-1175
29 " "	"	74 W.R. EDWARDS	731-721	119 E.V. CORLETT	676-1133
30 C.L. DOBBS, TRUSTEE	946-622	75 C.W. HUDSON	856-101	120 " "	"
31 " "	"	76 R.W. KODAR	814-1141	121 K.J. SHUTTS	724-266
32 R.C. HOOPER TRUST UTA	887-659	77 J.K. BERARD + 1/2 #78	814-1141	122 " "	"
33 J.A. RA. SUZELIS	887-659	78 B.A. RAYMOND 1/2 #78	814-1141	123 J.H. SPANO	695-872
34 " "	"	79 " "	"	124 J.L. McHENRY + 1/2 #124, 125	775-341
35 " "	"	80 M. S. SPASSER	726-1057	125 H.M. JONES	1/2 #124, 125 710-7304
36 J. TRODICK + N.V. of 51/32	623-530	81 F.G. M.J. MILLER	789-259	126 G. FRAPPETT	1/2 #124, 125 710-7304
37 R.H. BIRD	733-50	82 M.J. YOONHEES	808-445	127 " "	"
38 G.H. HILL + 1/2 #10	710-270	83 C. BRETTE	848-535	128 D.A.F. M. GYONGYOS	899-734
39 K.T. BLOOM + W. Thompson	971-275	84 KE. J. D. SHUTTS	583-114	129 L.J. GORRETTA	931-571
40 " "	"	85 D.C. JOHNSON	970-304	130 R.M. De SORRIS	430-640
41 R.J. MONLS	836-36	86 G.M. WYVILLE	857-944	131 R.J. SORRY	718-364
42 " "	"	87 J.A. CONLEY	246-417	132 D.R. HOLLINGSWORTH	731-536
43 " "	"	88 D.T. CONLEY	623-538	133 J.F. BLANCK	64-1118
44 S.C. WILBERG	809-428	89 M.T. BROWN	475-470	134 T. REDWYCH	805-1274
45 " "	"	90 F.F. VAN LENTE	687-64	135 T.S. MCCARTHY	502-1035

136 J.H. FOSTER	963-1190	136 A.B. GRATZL	865-557	256 J.E. JOHNSON	1/2 #257	812-528
137 S. SCHMIDT & P. SCHMIDT	378-453	137 K.K. ANDERSON	942-622	257 E.M. SHANKS	1/2 #258	1008-104
138 J. NELSON	1/2 #133	138 T.J. FOX	765-378	258 F.L. KING	"	706-1070
139 SIBELIA (LAWYER 1/2 #132)	"	139 E.V. BEJANGER	469-345	259 F.L. KING	"	1005-803
140 J.G. BYRNE + 1/2 #133	718-909	200 " "	"	260 V. REITZ MILL	"	613-85
141 R.K. TROPE + 1/2 #142	501-385	201 K.S. WALLMAN + 1/2 #200	903-232	261 D.R. DAVIS + 1/2 #262	"	718-514
142 H. JOHNSON (K. ROBERTS)	800-549	202 W.L. B. STREET	974-437	262 " "	"	593-776
143 " "	681-1034	203 " "	"	263 E.W. DYWIS	1/2 #262	824-1184
144 J.I. ALPHEUS	788-183	204 R.M. EARLY + 1/2 #103 + 1/2 #105	470-603	264 D.V. SUTLIF	"	950-685
145 E.T. VADULA	980-1212	205 T.S. MARRAS	924-872	265 J. LIND. JR.	"	647-958
146 M.C. JANTZ	776-986	206 C.R. K.R. ONDWELL + 1/2 #206 + 1/2 #208	746-804	266 G.R. K.R. GILWAY	"	269 "
147 S.J. B. CAIN	784-233	207 " "	"	267 " "	"	270 "
148 J. KENNETH HOWELL	651-412	208 " "	"	268 C.E. FIRCH	"	944-86
149 " "	"	209 S. THOMAS	809-734	269 C.S. BLAKS & J.L. ANKETT	"	967-442
150 P. MARZ & J. MARZ	876-382	210 K.R. SCHNECKEL	629-100	270 W.D. J.B. YOUNG	"	927-897
151 D.T. EGLESTON	878-276	211 " "	"	271 J.E. RITZKY	"	944-222
152 O.A. L. LICHTY	859-1181	212 P.B. McCLAIN	911-878	272 T.F. & M.L. WANNENSTROM	"	725-638
153 H.C. Rankin	785-653	213 E. W. McCoy	591-82	273 W.I. LOUISWAY	"	841-156
154 J.F. D.M. POSTA	877-590	214 M.J. SHINELY, TRUSTEE	1/2 #214	274 D.M. VOSS	"	705-1358
155 " "	"	215 " "	"	275 C.T. B. STULL	"	272-630
156 " "	"	216 M.F. MANN	716-1020	276 H.I.K. STEVEN + 1/2 #282	"	320-6
157 " "	"	217 " "	"	277 " "	"	282
158 D.B. K. UNOVICH	969-307	218 J.F. LESTY	770-255	278 J.A.M. LITTLEMAN 1/2 #282	"	913-215
159 D.D. BARRIBALL	974-22	219 " "	"	279 S.A.N. ARTHUR 1/2 #286	"	895-675
160 J.S. STANTON	878-508	220 W.F. K.A. SANG	887-154	280 S.P. ARTHUR	1/2 #286	524-176
161 S. KRIDER	804-1291	221 L.F. HICKMAN	607-364	281 C.B. KNOWLES, JR.	"	588-1060
162 W.M. WELLS + 1/2 #161	771-312	222 J.M. & C.M. PANZARO	948-442	282 " "	"	"
163 P.S. & K.Z. DEUTSCH	780-128	223 " "	"	283 A.M. LITTLEMAN 1/2 #282	"	913-215
164 " "	"	224 " "	"	284 R. BLAIR	"	285
165 H. W. J.G. (S. B.J. KOTAPSI)	789-1122	225 " "	"	285 S.A.N. ARTHUR 1/2 #286	"	895-675
166 C.B. & J.D. KLEIN	1002-121	226 N.S. ALEXANDER + 1/2 #226	717-825	286 S.P. ARTHUR	1/2 #286	524-176
167 " "	"	227 D.V. SUTLIF	593-716	287 " "	"	"
168 D.C. McCLENNAN	804-496	228 " "	"	288 " "	"	"
169 D.C. McCLENNAN	804-684	229 J.H. MARSHALL 3/8 ONLY	876-1105	289 " "	"	"
170 " "	"	230 D.S. DOMITRACI + 1/2 #230 + 1/2 #251	776-215	290 " "	"	"
171 M.L. & K.L. FORD, JR.	768-1177	231 " "	"	291 " "	"	"
172 J.T. HARGRAVE	914-1101	232 I.M. KONIG + 1/2 #231 + 1/2 #233	512-941	292 " "	"	"
173 C.R. WILCOX	"	233 R.P. GILBERT	611-679	293 " "	"	"
174 " "	"	234 " "	"	294 " "	"	"
175 C.R. WEYNELLER	711-504	235 J.M. RUNGE + 1/2 #235	617-567	295 " "	"	"
176 " "	"	236 " "	"	296 " "	"	"
177 H. R. B. FREDMAN	857-903	237 M. V. GORRETTA + 1/2 #237 + 1/2 #238 + 1/2 #239	818-492	297 " "	"	"
178 " "	"	238 S.C. & J. ZACHRY	930-726	298 " "	"	"
179 " "	"	239 " "	"	299 " "	"	"
180 J.C. & M.M. GULL + 1/2 #181	920-805	240 " "	"	300 " "	"	"
181 " "	"	241 J.J. BYRNE + 1/2 #241 + 1/2 #242 + 1/2 #243	811-679	301 " "	"	"
182 B.K. LADLEY	311-150	242 A.F. WALKER	"	302 " "	"	"
183 R.S. NEMO	702-97	243 J. CARPENTER + 1/2 #243 + 1/2 #244	720-313	303 " "	"	"
184 " "	"	244 F.T. & R.A. DURAN	867-1	304 " "	"	"
185 R.D. NABIE + 65' of 184	551-1007	245 " "	"	305 " "	"	"
186 L. BARRIBALL	786-581	246 M.J. WHITMAN	565-84	306 " "	"	"
187 " "	"	247 J. J. L. SHELTON	792-994	307 " "	"	"
188 " "	"	248 " "	"	308 " "	"	"
189 A.B. GRATZL	855-557	249 J.C. ALBERT + 1/2 #249	804-25	309 " "	"	"
190 " "	"	250 M. MARSHALL & C. BERNHART	682-278	310 " "	"	"
191 " "	"	251 " "	"	311 " "	"	"
192 " "	"	252 M.J. TURNER	270-336	312 " "	"	"
193 F.A. KOLBES	835-816	253 M.D. BROWN + 1/2 #252	588-1000	313 " "	"	"
194 M.B. GRATZL	855-557	254 Z.G. HANKINS	911-478	314 " "	"	"
195 " "	"	255 R.P. CONRAD	743-1094	315 " "	"	"

1. B.K. CONLEY 834-1052 - TRADUPLICATE TO AC - DEED 6994C
 2. BARRIBALL 757-311 - TRADUPLICATE TO AC - DEED 6994C
 3. E.M. CROTT 758-1142 - (FRONTAGE) DEED - 452 AC. TAX DUPLICATE - 28 AC. 244C



1-800-345-7334
 SCALE IN 1/10 OF AN INCH

SCALE 1"=300'

432

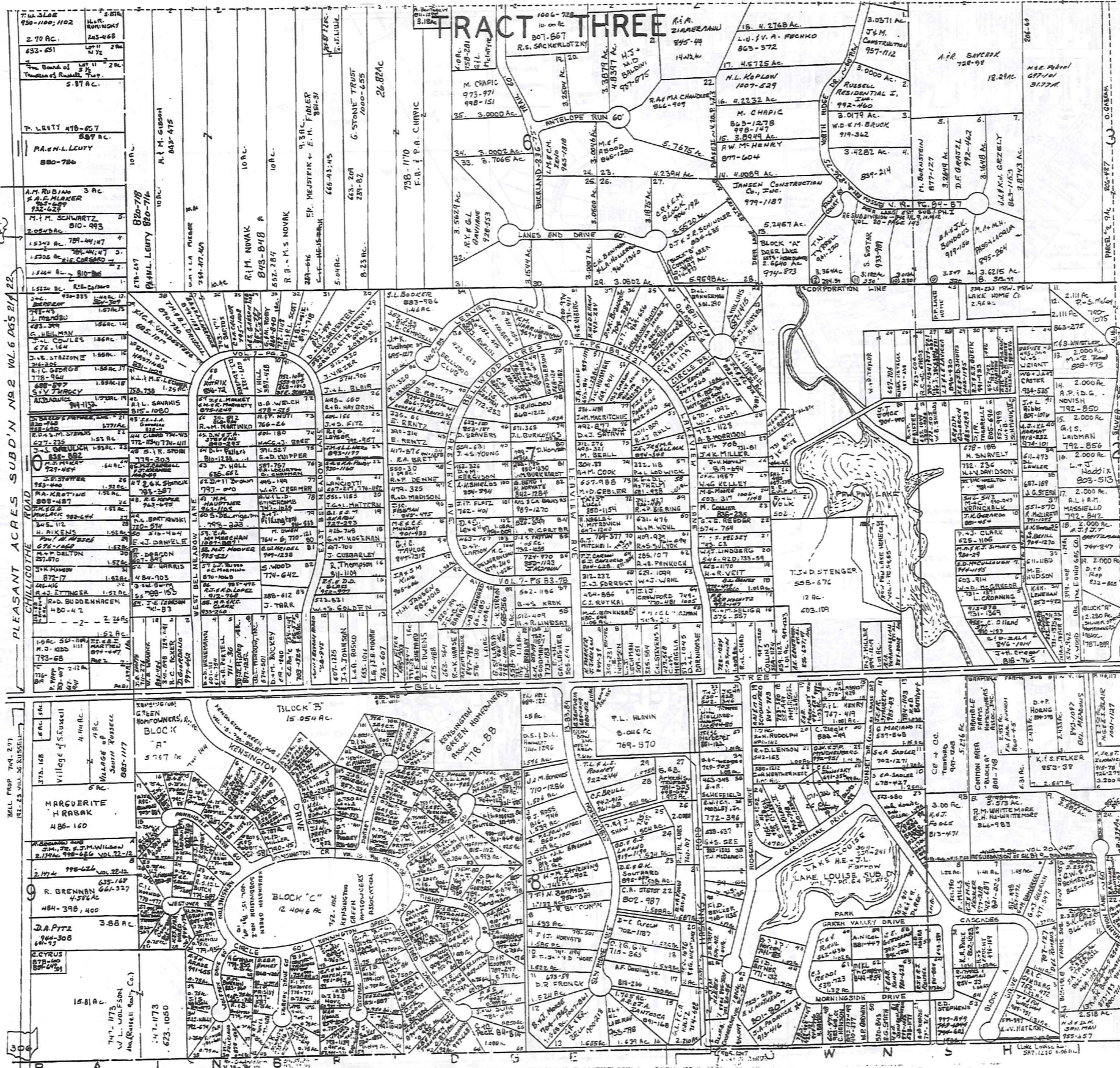
* Inadequate description

JANUARY 1, 1995

A	B	C	D
E	F	G	H
I	J	K	L
M	N	O	P

RUSSELL - M
 RELATIVE REPRESENTATION

SEE MAP N



M.E. & J.L. FRADY VOL. 304 Pgs. 259-261
"Lake Louise"
Subst. Vol. 7 Pgs. 64

1	259	259	REV. MATERNI
2	259	259	G.M. YASGER
3	259	259	R.C. GUNBERG
4	259	259	DEL. ROMAN
5	259	259	G.C. GOODRICH
6	259	259	G.A. BAMBERGER
7	259	259	K.T.M. KESLER 971-718
8	259	259	P.H. MILLS
9	259	259	H. BAKER 889-1519
10	259	259	S.G. SULLER 677-949
11	259	259	S. A. SULLER
12	259	259	G. HARRIS 684-941
13	259	259	N.D. BARNHART
14	259	259	K.E.J. FOGLE

SCALE 1"=300'
JAN. 1, 1995

11	882	47	SEAR, STANZYK
12	878	228	A.K. MALMOIST
13	878	228	F.R. MORDNEY TRUSTEES; 997-389
14	878	228	MET. RIBBEL
15	878	228	R.W.M.D. SCHORNBERG
16	878	228	REN. RUDOLPH
17	878	228	RED. LEWIS
18	878	228	W.C. WEATHERHEAD
19	878	228	LAKE LOUISE SUB
20	878	228	LEE OTTIN
21	878	228	SEN. HOLLIES
22	878	228	W.M. HARRINGTON
23	878	228	
24	878	228	C.W. EPP. NUNENBERG
25	878	228	C. STEIN
26	878	228	T.S. JENA
27	878	228	MASIELLO
28	878	228	T.E. S.E. HERBERER
29	878	228	B. WEBSTER
30	878	228	E. SCHENFIELD
31	878	228	R.W.E.S. MOBLEY, JR.
32	878	228	O.C. S. SEE
33	878	228	T.J. MCDANIELS
34	878	228	A. B. BAKER
35	878	228	J.B. TRIPP
36	878	228	D.L.M.B. COFFRIDER
37	878	228	G.E.D. MORTON
38	878	228	G.E.D. BAKER
39	878	228	E.T. MATHEWS
40	878	228	D. COLEMAN
41	878	228	N.L. BAKER 944-240
42	878	228	C. HANSON 932-616
43	878	228	W.M. GARDIN
44	878	228	A.C. SMITH
45	878	228	M.E. JOHNSON TRUSTEES
46	878	228	A.D. KAUSE
47	878	228	C.D. STEPHENS 977-847
48	878	228	R. MYERS & T. WILSON
49	878	228	R.E.S. FLEWCH
50	878	228	L.G. PARR
51	878	228	E. F. TITCHELBAK
52	878	228	A. NIEBL
53	878	228	T.O.V. RIEHL
54	878	228	C.S. REDDY
55	878	228	M.E.L. THOMPSON
56	878	228	S.E.A. KOHN
57	878	228	
58	878	228	
59	878	228	
60	878	228	

A	B	C	D
E	F	G	H
I	J	K	L
M	N	O	P

RUSSELL-0
RELATIVE REPRESENTATION

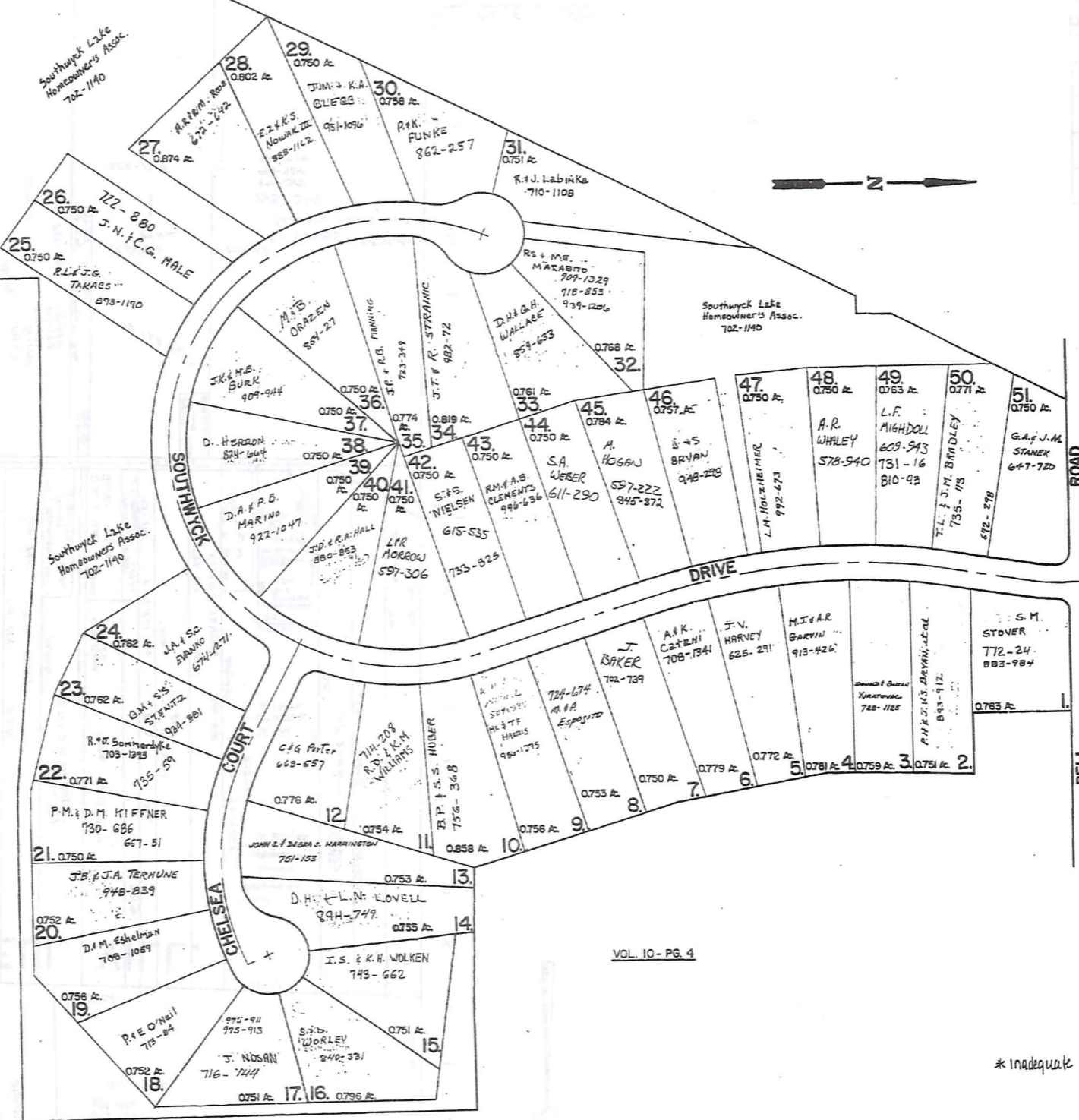
TRIM-RED 1-800-345-7334 SCALE IN FEET OR INCH

VILLAGE OF SOUTH RUSSELL
WASTE WATER TREATMENT
PLANT SITE
5.440 A.
(0.29 A BAINBRIDGE TWP.)

BAINBRIDGE TOWNSHIP
RUSSELL

VOL. 9 - PG. 101

SHEERBROOK ACRES



VOL. 10 - PG. 4

* Inadequate description

SHEERBROOK ACRES NUMBER 2

JAN. 1, 1995

RELATIVE REPRESENTATION

14-Q

1-800-345-7334

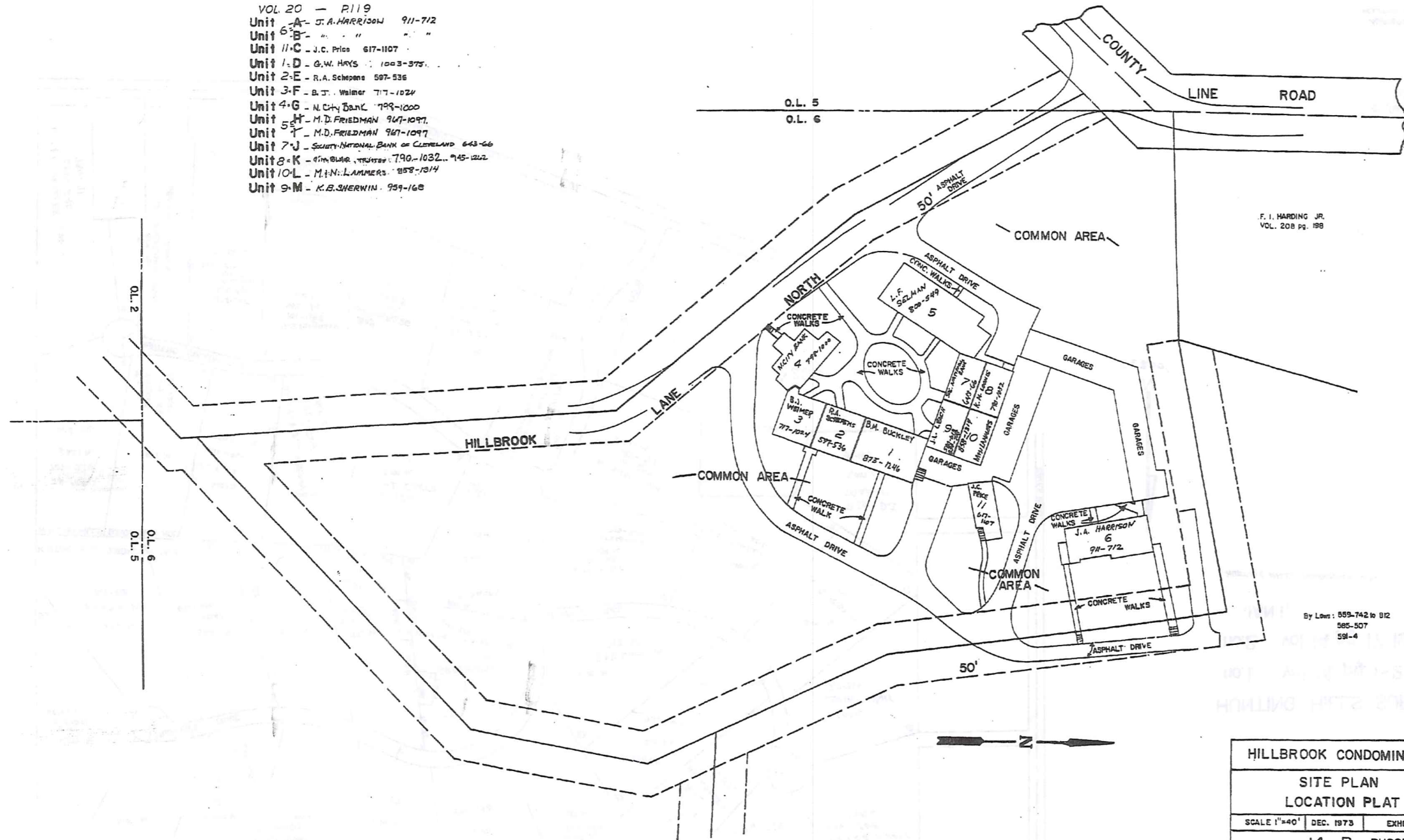
TRU-BEED

SCALE IN FEET OF AN INCH

436

AMENDED
HILLBROOK CONDOMINIUM

- VOL. 20 - P119
 Unit A - J.A. HARRISON 911-712
 Unit B - " " " "
 Unit C - J.C. Price 617-1107
 Unit D - G.W. HAYS 1003-3751
 Unit E - R.A. Schepens 597-536
 Unit F - B.J. Walmer 717-1024
 Unit G - N. City Bank 799-1000
 Unit H - M.D. FRIEDMAN 907-1097
 Unit I - M.D. FRIEDMAN 907-1097
 Unit J - SOCIETY NATIONAL BANK OF CLEVELAND 643-66
 Unit K - FIDELITY TRUSTS 790-1032, 745-1212
 Unit L - M.N. LAMMERS 858-1314
 Unit M - K.B. SHERWIN 959-168



F. I. HARDING JR.
VOL. 208 pg. 198

By Laws: 859-742 to 812
565-507
591-4

1-800-345-7334
 TRIM-REDI
 SCALE IN 1/16 OR 1/8 INCH

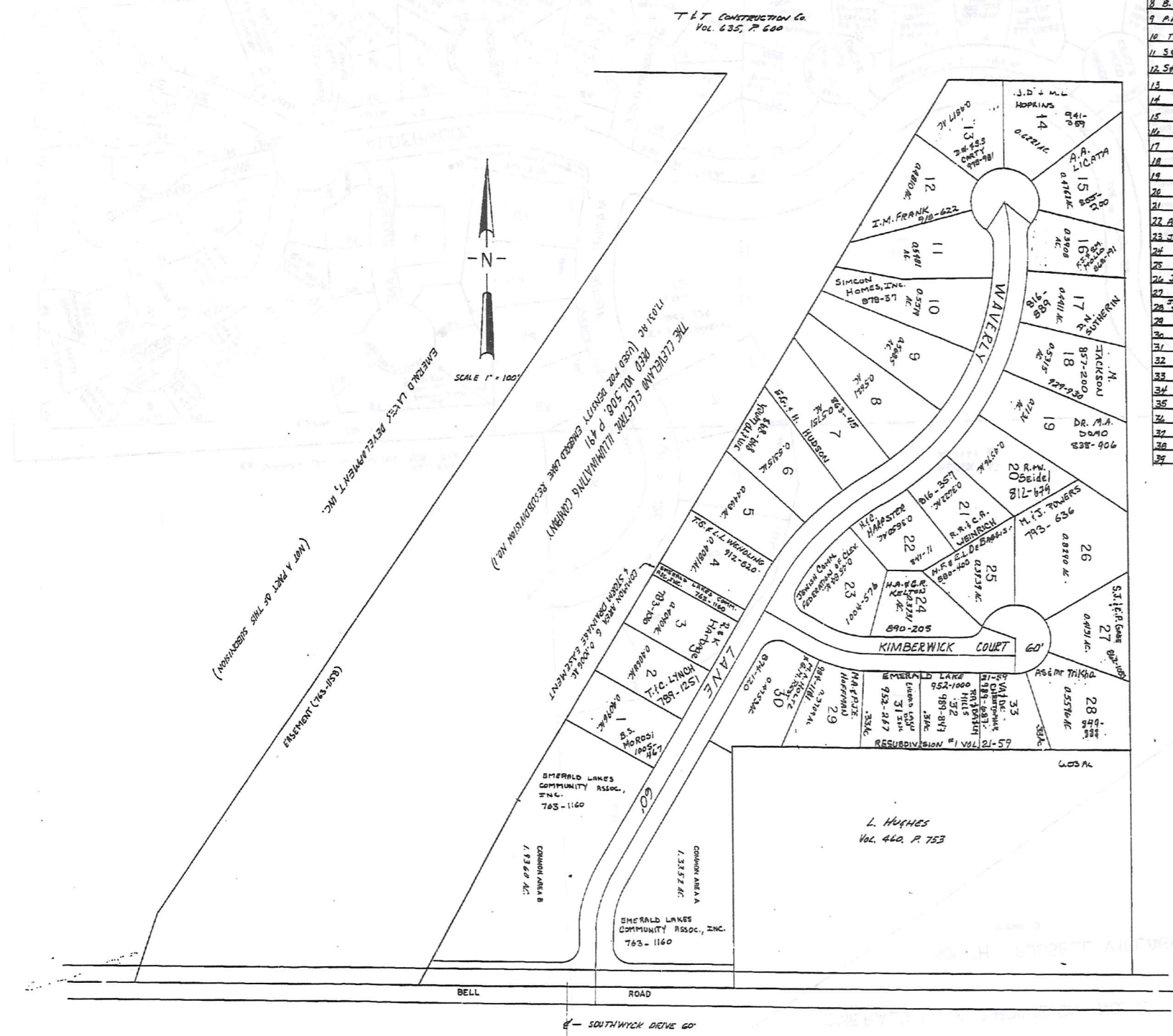
437

HILLBROOK CONDOMINIUM		
SITE PLAN		
LOCATION PLAT		
SCALE 1"=40'	DEC. 1973	EXHIBIT B
14 - R RUSSELL		

Recorded Vol. 10 pg. 39
AMENDED VOL. 20 - P119 8-11-92

JAN. 1, 1995

RELATIVE REPRESENTATION
* Inadequate description



Lot No.	Vol.	Pg.	Date	Lot No.	Vol.	Pg.	Date
1				11			
2				12			
3				13			
4				14			
5				15			
6				16			
7				17			
8	B.W. FIALKO, TRUSTEE	955-282	9-28-93	18			
9	P.A. BASISTA	955-284	9-28-93	19			
10	T.M. & C.A. BASISTA	955-286	9-28-93	20			
11	S.E.S. BLDG. REALTY Co.	952-990	9-28-93	21			
12	S.E.S. BLDG. REALTY Co.	952-990	9-28-93	22			
13				23			
14				24			
15				25			
16				26			
17				27			
18				28			
19				29			
20				30			
21							
22	A.G. & M.N. HARRIS	1000-255	10-5-94				
23	J.W. & J.A. BAUER	952-355	4-26-94				
24							
25							
26	J.L.E.R. COLLINS	1001-225	11-25-94				
27							
28	F.R. GIBSON	1000-277	11-28-94				
29	F.R. GIBSON	1000-277	11-28-94				
30							
31							
32							
33							
34							
35							
36							
37							
38							
39							
40							

EMERALD LAKE
SUBDIVISION NO. 1
VOL. 15 - PG. 107, 108 &
RESUBDIVISION NO. 1
VOL. 15 - PG. 134, 135

1" = 100'

JANUARY 1, 1995

* inadequate description

TRIM-N-RED
1-800-345-7334

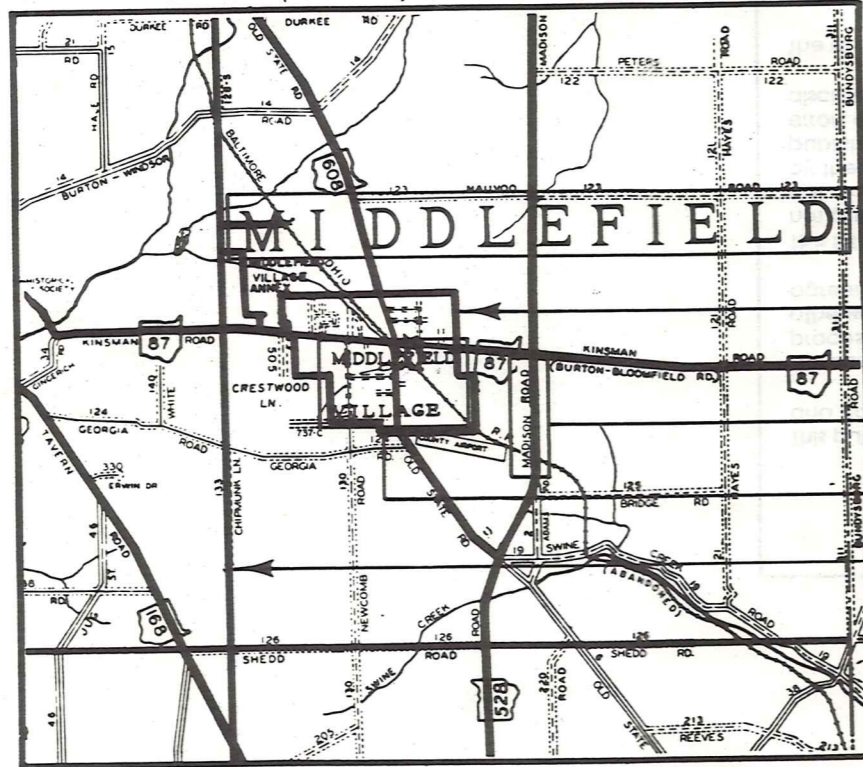
SCALE IN 1/100 OF AN INCH

439

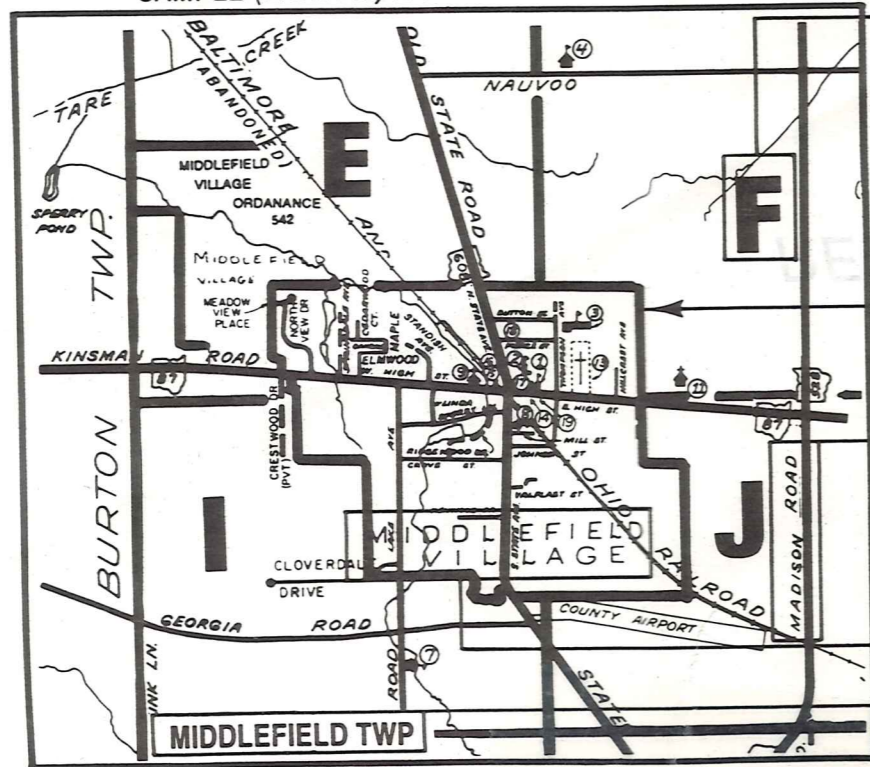
Explanation and Use Sheet for Geauga County, Ohio

A

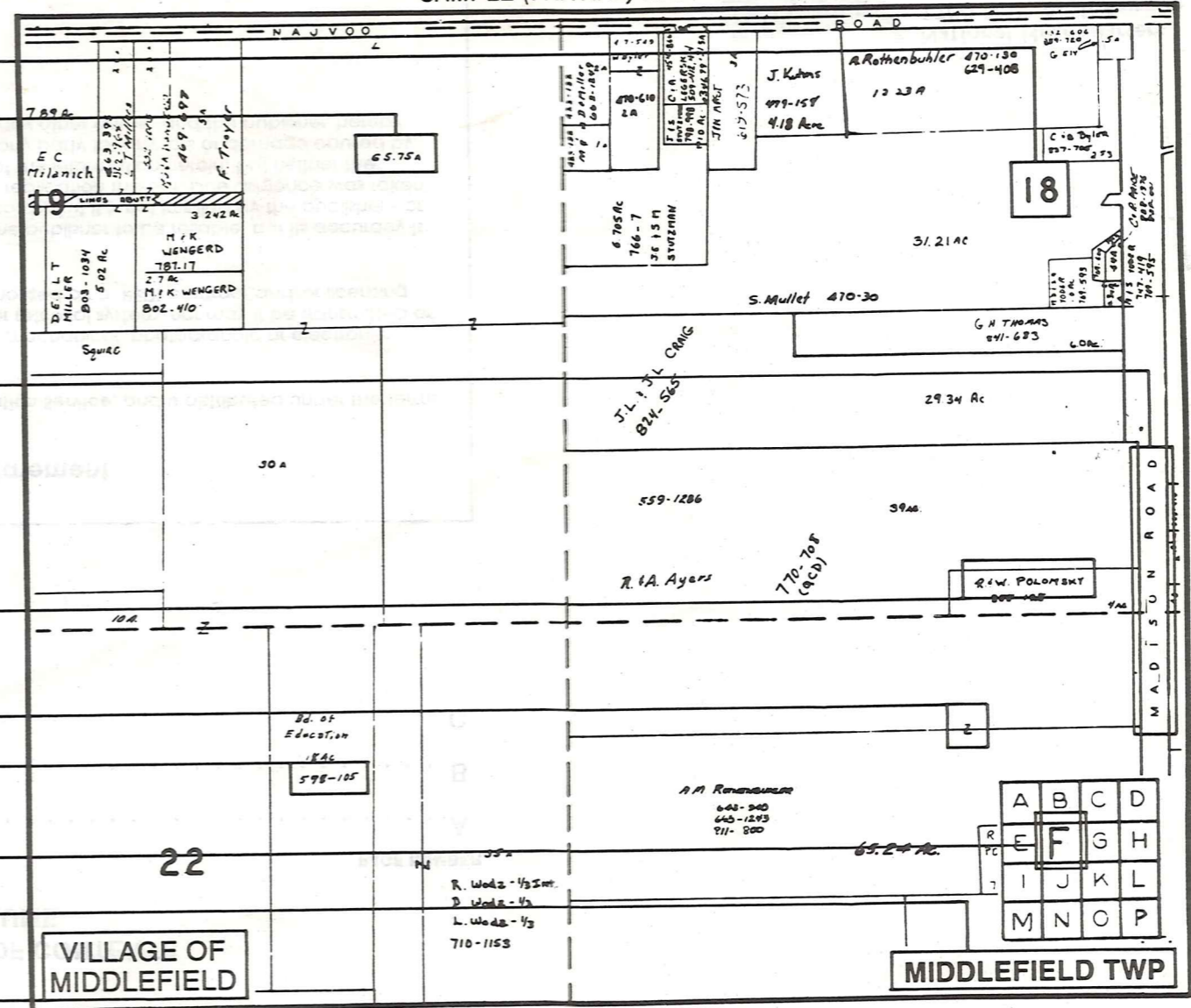
SAMPLE (PARTIAL) COUNTY INDEX MAP



SAMPLE (PARTIAL) MUNICIPALITY INDEX MAP



SAMPLE (PARTIAL) MAP PAGE



- Tract Lot Number
- Acreage
- Township Name
- Village Boundary
- Street Name
- Village Name
- Township Boundary
- Owners Name
- Denotes Continuous Ownership
- Deed Book & Page
- Map Page Number
- Township Name
- Village Name

- Village Boundary
- Street Name
- Village Name
- Township Name

USE OF THE MAP VOLUME

1. LOCATE THE GENERAL AREA OF INTEREST ON THE COUNTY INDEX MAP AND NOTE THE MUNICIPALITY NAME (TOWNSHIP OR VILLAGE).
 2. REFER TO THE TABLE OF CONTENTS AND NOTE THE BEGINNING ATLAS PAGE NUMBER FOR THE MUNICIPALITY OF INTEREST.
 3. TURN TO THE PAGE INDICATED, ON THIS PAGE WILL APPEAR AN INDEX MAP FOR THAT MUNICIPALITY.
 4. LOCATE THE GENERAL AREA OF INTEREST AND NOTE THE MAP PAGE NUMBER. THIS MAY BE EITHER A LETTER OR A NUMBER.
 5. MAP PAGES ARE IN ALPHABETICAL (OR NUMERICAL) SEQUENCE FOLLOWING THE MUNICIPALITY INDEX MAP. FOLLOW SEQUENCE TO THE MAP PAGE INDICATED.
 6. LOCATE SPECIFIC PARCEL OF INTEREST AND NOTE THE DESIRED INFORMATION.
- NOTE: ON SOME MAPS YOU MAY BE REFERRED TO A DETAIL SHEET SHOWING AN ENLARGEMENT OF THE AREA. THESE MAPS ARE FOUND AT THE END OF THE REGULAR MAP PAGES IN EACH MUNICIPALITY IN EITHER ALPHABETICAL OR NUMERICAL SEQUENCE.
- NOTE: CHARDON VILLAGE HAS TITLE SHEETS. TO LOCATE OWNERS NAME, NOTE THE PARCEL NUMBER, REFER TO THE TITLE PAGE FOLLOWING THE MAP OF INTEREST, FOLLOW NUMERICAL SEQUENCE TO THE PARCEL NUMBER OF INTEREST AND NOTE THE DESIRED INFORMATION. IN ALL OTHER MUNICIPALITIES THE OWNERS NAME APPEARS ON THE MAP PAGE.